

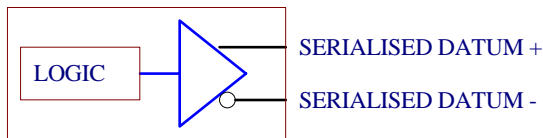
Absolute serial asynchronous encoder

Electronics Data

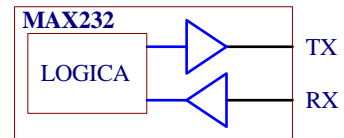
Resolution:	Single turn 12 Bit Multiturn 24 bit (12 Bit single turn - 12 bit multiturn)
Power supply:	11-24V +/- 5%
Current consumption:	Single turn 3Watt max. Multiturn 6 Watt max.
Baud rate :	300 to 115.200 baud
Outputs:	Differential in RS422,RS232 standard
Programmable Code:	Gray/Binary/BCD/ASCII
Programming:	Line in RS232
Operating Temp.:	0/60°C

Output circuits

Output Driver RS-422

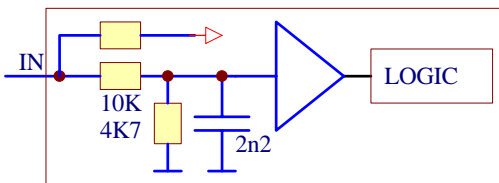


Circuit RS-232

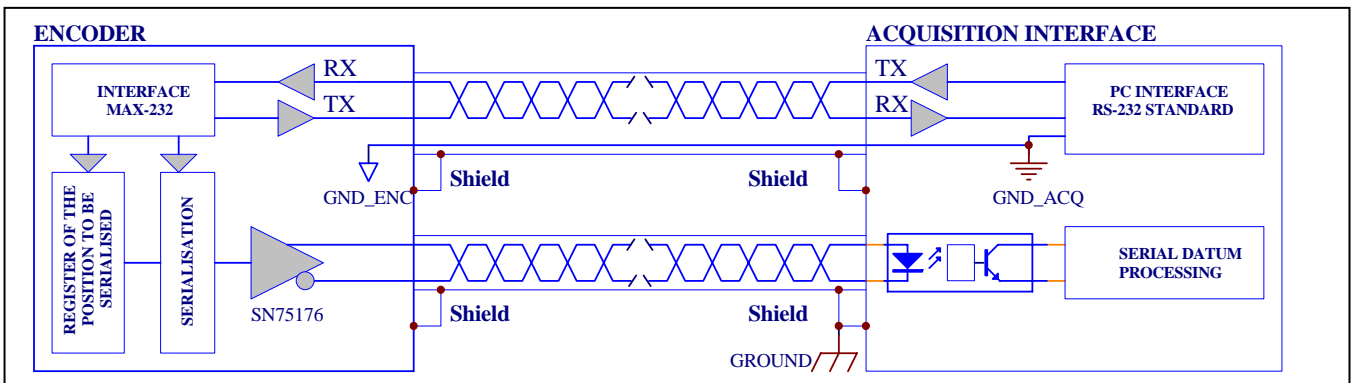


Input circuits

Programming Bit Input



Data transmission



Ordering code

*	*	*	-	*	*	*	*	/	*	/	*
Series				Shaft		Flange	Outputs	Connections	Options		Pulses/Turn
Ø58mm ASI = Singleturn ASM = Multiturn				Ø58mm 3=Ø 6mm L10mm 6=Ø 8mm L20mm 1=Ø10mm L20mm		Ø58mm 1=See 3= page 6= draw	1=RS422- RS485/ RS232	1=9416 Axial 2=9416 Rad 9=Cable axial 3=Cable rad.	0=None		
Ø65mm AMS = Singleturn AMM = Multiturn				Ø65mm 3=Ø 6mm L10mm(AMS) 6=Ø 8mm L20mm (AMS) 1=Ø10mm L20mm		Ø65mm 3=Ø 65mm					
Ø90mm ATS = Singleturn ATM = Multiturn				Ø90mm 1=Ø 10mm L25mm 2=Ø 12mm L25mm		Ø90mm 3=Ø 90mm					

CABLE		Contact 12P IP65		<i>Connections</i>	
Pink	1				
Pink/Gray	2				
Brown	3	DATA A. +		Data +	
Brown/Gray	4	DATA A. -		Complementary Data +	
Blue	5	PROG_TX		Programming Input	
Blue/red	6	PROG_RX		Programming Input	
Beige	7				
Violet	8	UP/DOWN		Up/Down (active low)	
Yellow/White	9	RESET		Reset	
Yellow/Brown	10				
Red	11	POWER +		Power + (11-24V)	
Black	12	POWER. -		Power - (0V)	

In configuration standard, the encoder is: 12 Bit (singleturn) or 24 Bit (multiturn) of resolution, Parity inactive, increase clockwise and Binary code.
The programming encoder parameter, effect in RS232 with a module for PC supply in equipment.

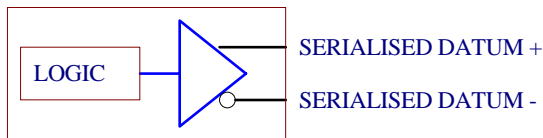
Absolute serial asynchronous encoder

Electronics Data

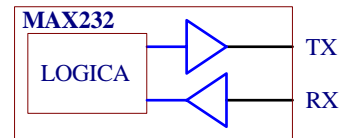
Resolution:	Single turn 12 Bit Multiturn 24 bit (12 Bit single turn - 12 bit multiturn)
Power supply:	11-24V +/- 5%
Current consumption:	Single turn 3Watt max. Multiturn 6 Watt max.
Baud rate :	300 to 115.200 baud
Outputs:	Differential in RS422,RS232 standard
Programmable Code:	Gray/Binary/BCD/ASCII
Programming:	Line in RS232
Operating Temp.:	0/60°C

Output circuits

Output Driver RS-422

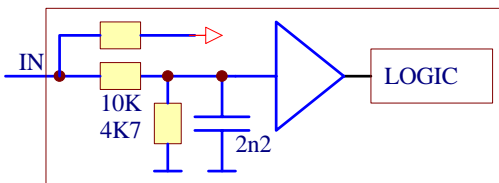


Circuit RS-232

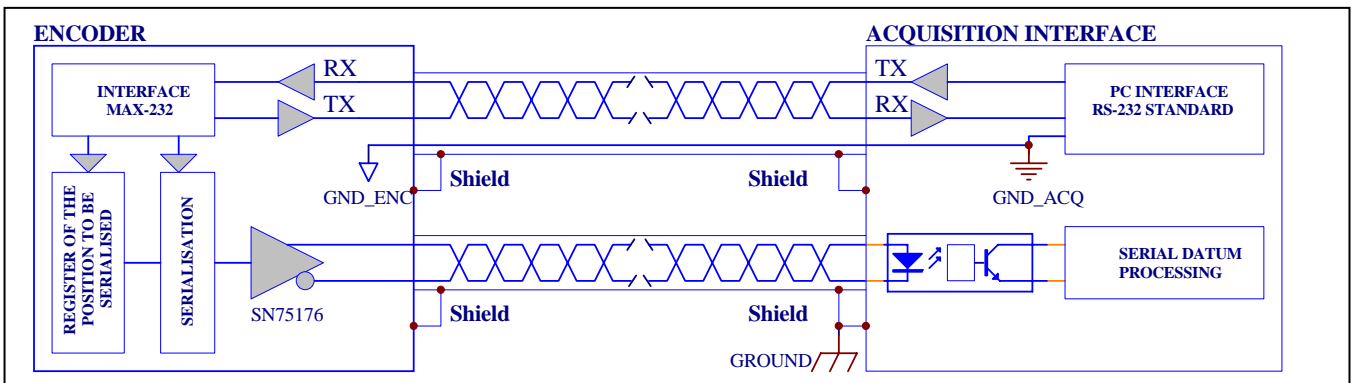


Input circuits

Programming Bit Input



Data transmission



Ordering code

*	*	*	-	*	*	*	*	/	*	/	*
Series				Shaft		Flange	Outputs	Connections	Options		Pulses/Turn
Ø58mm ASI = Singleturn ASM = Multiturn				Ø58mm 3=Ø 6mm L10mm 6=Ø 8mm L20mm 1=Ø10mm L20mm		Ø58mm 1=See 3= page 6= draw	1=RS422- RS485/ RS232	1=9416 Axial 2=9416 Rad 9=Cable axial 3=Cable rad.	0=None		
Ø65mm AMS = Singleturn AMM = Multiturn				Ø65mm 3=Ø 6mm L10mm(AMS) 6=Ø 8mm L20mm (AMS) 1=Ø10mm L20mm		Ø65mm 3=Ø 65mm					
Ø90mm ATS = Singleturn ATM = Multiturn				Ø90mm 1=Ø 10mm L25mm 2=Ø 12mm L25mm		Ø90mm 3=Ø 90mm					

CABLE		Contact 12P IP65		<i>Connections</i>	
Pink	1				
Pink/Gray	2				
Brown	3	DATA A. +		Data +	
Brown/Gray	4	DATA A. -		Complementary Data +	
Blue	5	PROG_TX		Programming Input	
Blue/red	6	PROG_RX		Programming Input	
Beige	7				
Violet	8	UP/DOWN		Up/Down (active low)	
Yellow/White	9	RESET		Reset	
Yellow/Brown	10				
Red	11	POWER +		Power + (11-24V)	
Black	12	POWER. -		Power - (0V)	

In configuration standard, the encoder is: 12 Bit (singleturn) or 24 Bit (multiturn) of resolution, Parity inactive, increase clockwise and Binary code.
The programming encoder parameter, effect in RS232 with a module for PC supply in equipment.

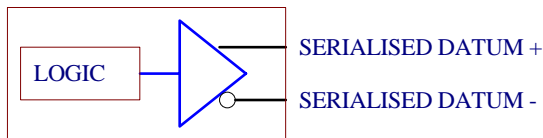
Absolute serial asynchronous encoder

Electronics Data

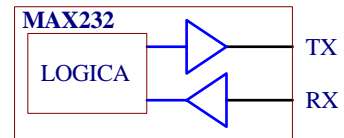
Resolution:	Single turn 12 Bit Multiturn 24 bit (12 Bit single turn - 12 bit multiturn)
Power supply:	11-24V +/- 5%
Current consumption:	Single turn 3Watt max. Multiturn 6 Watt max.
Baud rate :	300 to 115.200 baud
Outputs:	Differential in RS422,RS232 standard
Programmable Code:	Gray/Binary/BCD/ASCII
Programming:	Line in RS232
Operating Temp.:	0/60°C

Output circuits

Output Driver RS-422

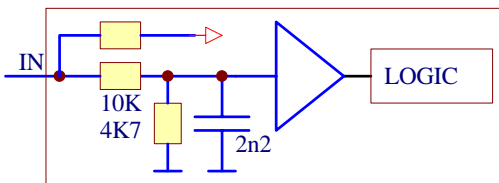


Circuit RS-232

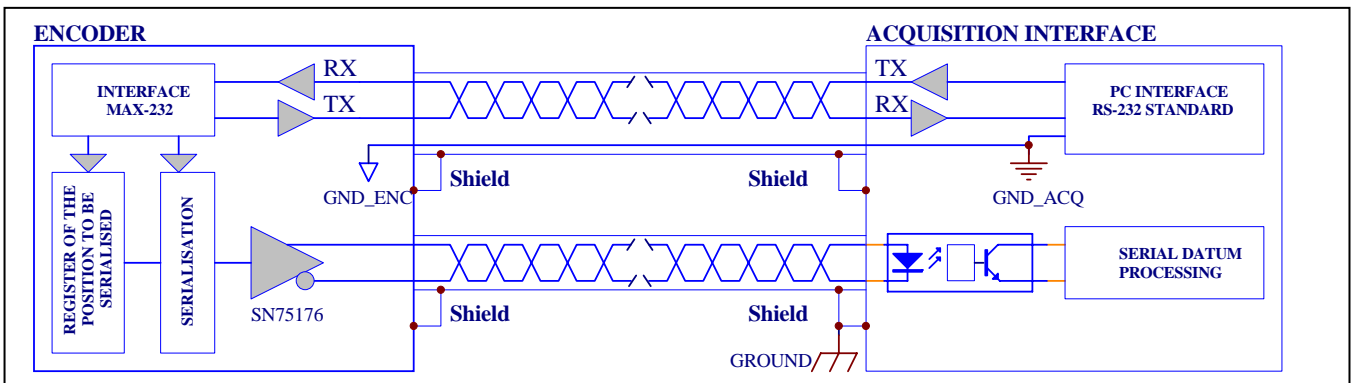


Input circuits

Programming Bit Input



Data transmission



Ordering code

*	*	*	-	*	*	*	*	/	*	/	*
Series				Shaft		Flange	Outputs	Connections	Options		Pulses/Turn
Ø58mm ASI = Singleturn ASM = Multiturn				Ø58mm 3=Ø 6mm L10mm 6=Ø 8mm L20mm 1=Ø10mm L20mm		Ø58mm 1=See 3= page 6= draw	1=RS422- RS485/ RS232	1=9416 Axial 2=9416 Rad 9=Cable axial 3=Cable rad.	0=None		
Ø65mm AMS = Singleturn AMM = Multiturn				Ø65mm 3=Ø 6mm L10mm(AMS) 6=Ø 8mm L20mm (AMS) 1=Ø10mm L20mm		Ø65mm 3=Ø 65mm					
Ø90mm ATS = Singleturn ATM = Multiturn				Ø90mm 1=Ø 10mm L25mm 2=Ø 12mm L25mm		Ø90mm 3=Ø 90mm					

		<i>Connections</i>			
CABLE	Contact 12P IP65				
Pink	1				
Pink/Gray	2				
Brown	3	DATA A. +	Data +		
Brown/Gray	4	DATA A. -	Complementary Data +		
Blue	5	PROG_TX	Programming Input		
Blue/red	6	PROG_RX	Programming Input		
Beige	7				
Violet	8	UP/DOWN	Up/Down (active low)		
Yellow/White	9	RESET	Reset		
Yellow/Brown	10				
Red	11	POWER +	Power + (11-24V)		
Black	12	POWER. -	Power - (0V)		

In configuration standard, the encoder is: 12 Bit (singleturn) or 24 Bit (multiturn) of resolution, Parity inactive, increase clockwise and Binary code.
The programming encoder parameter, effect in RS232 with a module for PC supply in equipment.